

# STUDIES IN THE COMPOSITAE-EUPATORIEAE, X. A NEW SPECIES OF HELOGYNE NUTTALL

R. M. KING and H. ROBINSON

*Department of Botany, Smithsonian Institution, Washington, D.C. 20560*

Among the specimens collected during the University of California (Berkeley) Seventh Botanical Garden Expedition to the Andes in 1964, is an apparently undescribed species of the xerophytic genus *Helogyne*. Material of this Peruvian species was originally submitted to Dr. Jose Cuatrecasas, who after determining its relationship to *Helogyne* passed it on to the senior author.

**HELOGYNE hutchisonii** R. M. King and H. Robinson sp. nov. Suffruticosa ad 25 cm alta, ramosissima, dense hirsuta; folia alterna, elliptica, integra, obtusa, breve petiolata, ad 1 cm longa et 3.5 mm lata; margine plerumque reflexa; capitula ca. 12 flora; involucre anguste campanulato, squamis 2-seriatis imbricatis subaequalibus, obovatis, breve acutis; receptaculum convexiusculum nudum; corollae luteolae, anguste tubulosae, extus dense glandulosae, ad 4 mm longae; pappi setae ca. 20, subplumosae, ad 2 mm longae; achaenia 5-6 costata, glandulosa.

Shrub or subshrub to  $\frac{1}{4}$  meter tall; very branched, stems, leaves, and phyllaries covered with coarse whitish pubescence; leaves alternate, elliptical, entire, obtuse, short petiolate, up to 1 cm long and 3.5 mm wide; margins usually somewhat reflexed; heads small with ca 12 flowers; involucre narrowly campanulate; phyllaries in two series, imbricated, subequal, obovate, shortly acute; receptacle convex, naked; corollas yellowish, up to 4 mm long, narrowly tubular with 5 rather short blunt lobes; anthers with short broad appendages; pappus with ca 20 subplumose setae, up to 2 mm long; achenes 5-6 ribbed, with numerous glands, chromosome number not determined.

Holotype in the United States National Herbarium (2577073) PERU: Department of Arequipa, lomas de Atico, km. 722 south of Lima. Elevation 10 meters. *Paul C. Hutchison and J. Kenneth Wright 7126, 23 November 1964.* Isotypes UC, USM, F.

The new species has rather short, subplumose pappus setae and short appendages on the anthers similar to those of *H. apaloidea* Nutt. and *H. macrogyne* (Phil.) B. L. Robinson. Of these latter species, *H. macrogyne* differs by the unequal phyllaries. *Helogyne apaloidea*, the type species of the genus, seems closest to *H. hutchisonii* but has narrow toothed or lobed leaves and has narrower sometimes lanceolate phyllaries.

## REFERENCES

- HIERONYMUS, G. 1908. Compositae andinae. I. *in* Urban. *Plantae novae andinae imprimis Weberbauerianae* III. *Engl. Bot. Jahrb.* 40:352-395.  
MATTFELD, J. 1923. Eine neue *Helogyne* aus Peru. *Feddes Repert.* 19:78-79.

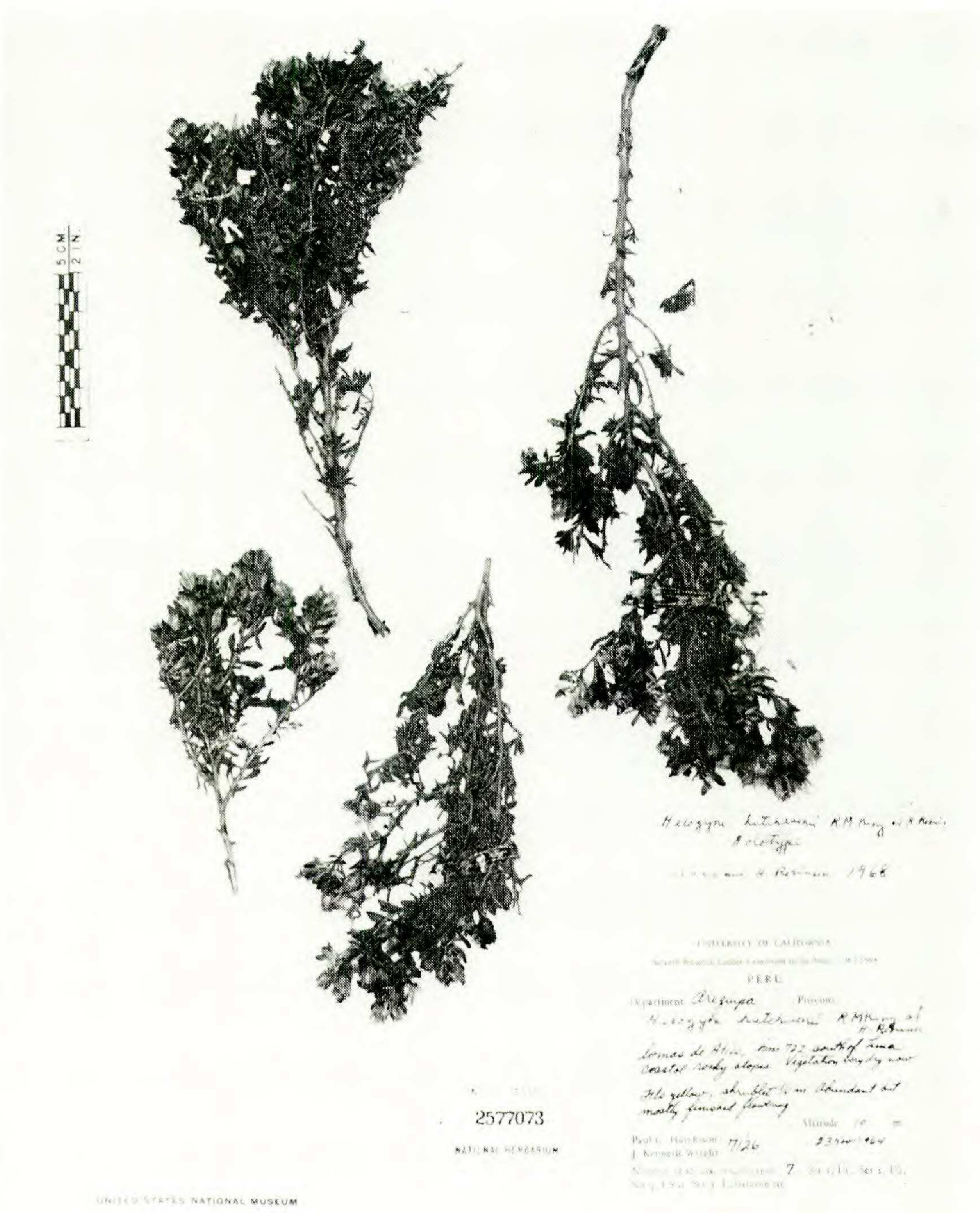


Plate I. *Helogyne hutchisonii* R. M. King and H. Robinson Holotype (US), P. C. Hutchison and J. K. Wright 7126.

NUTTALL, T. 1841. Descriptions of new species and genera of plants in the natural order of the Compositae, collected in a tour across the continent to the Pacific, a residence in Oregon, and a visit to the Sandwich Islands and Upper California during the years 1834 and 1835. *Trans. Amer. Phil. Soc.* n.s. 7:283-453.

ROBINSON, B. L. 1906. Studies in the Eupatorieae, III. The genus *Helogyne* and its synonyms. *Proc. Amer. Acad.* 42:27-32.